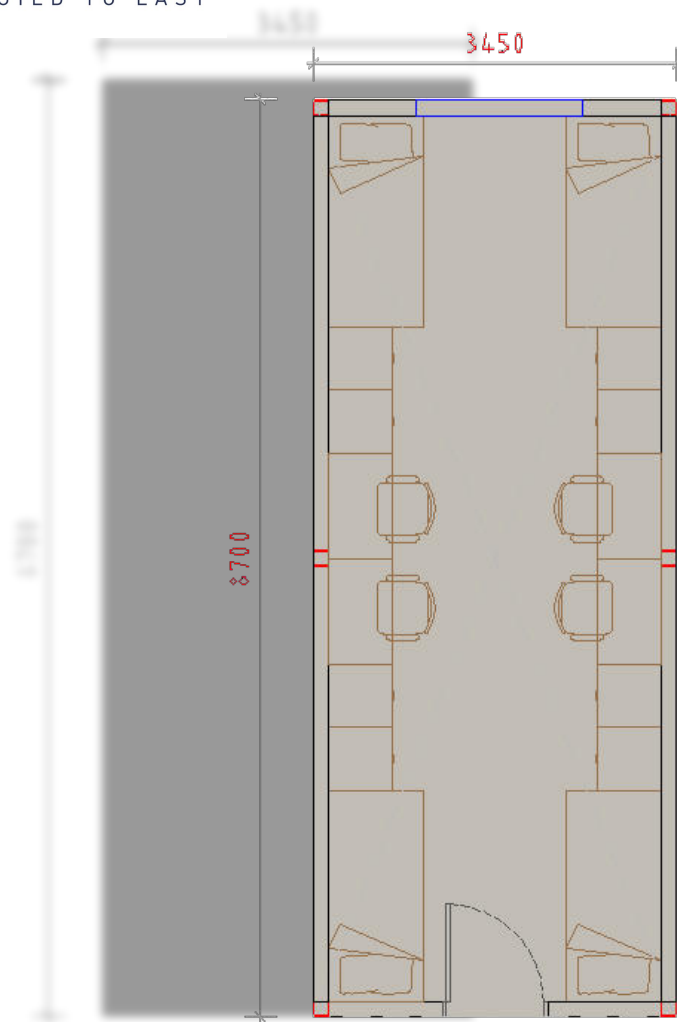


OPTION - A

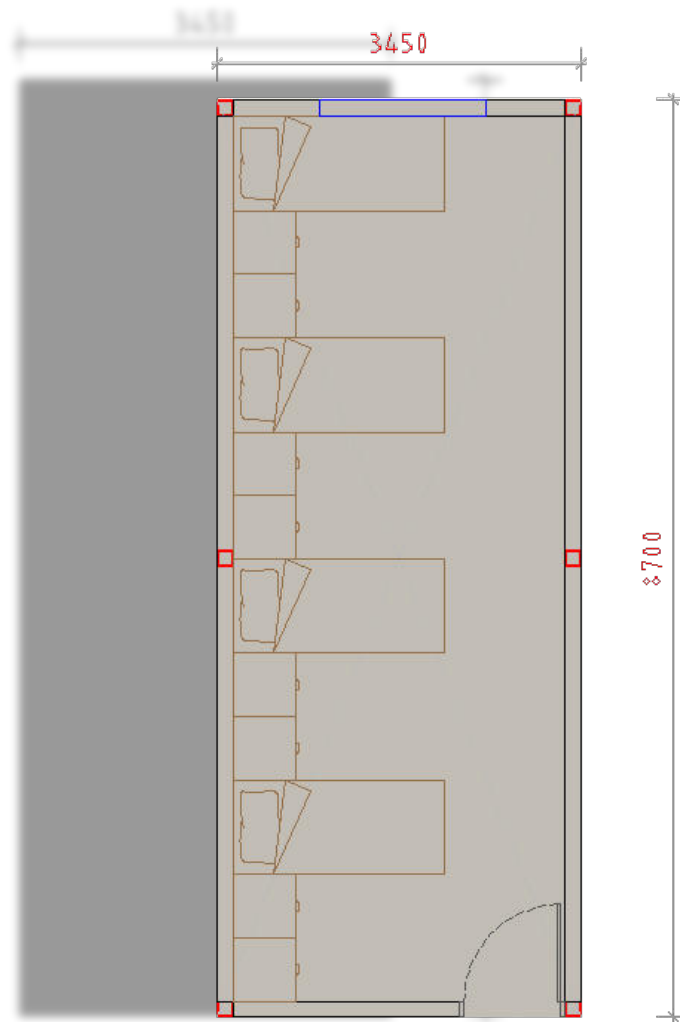


PLOT AREA – 74,882.4 SQ.M

- TOTAL ACCOMODATION – 5,500 BEDS
- GROUND FLOOR AREA – 16,692.2 SQ.M
- TOTAL BUILD UP AREA (G+4) – 16,692 X 5 = **83,460 SQ.M**
- TOTAL BUILDINGS – 14 NOS.
- MODULES PER FLOOR (EACH BUILDING) – 36 NOS (Including Service Block, Kitchen & Toilets)
- TOTAL MODULES PER BUILDING – 36 X 5 = 180 NOS
- TOTAL MODULES FOR PROJECT – 180 X 14 (Buildings) = 2,520 NOS
- EACH MODULE SIZE – 3.45M X 8.7M = 30 SQ.M (Excluding corridor)
- EACH BUILDING SIZE (36 MODULES & Including 1.8m wide corridor) – 62.1M X 19.2M = 1192.3 SQ.M



OPTION 1



OPTION 2

TYPICAL ROOM (4 NOS SINGLE BEDS)

TYPICAL FLOOR PLAN (36 MODULES)

