



PREFABRICATED PREFINISHED VOLUMETRIC CONSTRUCTION

for Healthcare, Educational, Commercial & Social Housing Projects



NAFFCO is a global leader in manufacturing and supplying top-tier safety and fire building solutions with over 15,000 employees, over 2,000 engineers and more than 6.5 million sq. ft. of manufacturing plants



SERVING OVER
100 COUNTRIES
WORLDWIDE



OVER
15,000
EMPLOYEES



OVER
8.5 MILLION ft²
MANUFACTURING FACILITIES



OVER
2,000
ENGINEERS
WORLDWIDE



OVER
1,000
INTERNATIONALLY
CERTIFIED
PRODUCTS

FOR MASS VOLUME CONSTRUCTION PROJECTS



MODULAR BUILDING SOLUTIONS

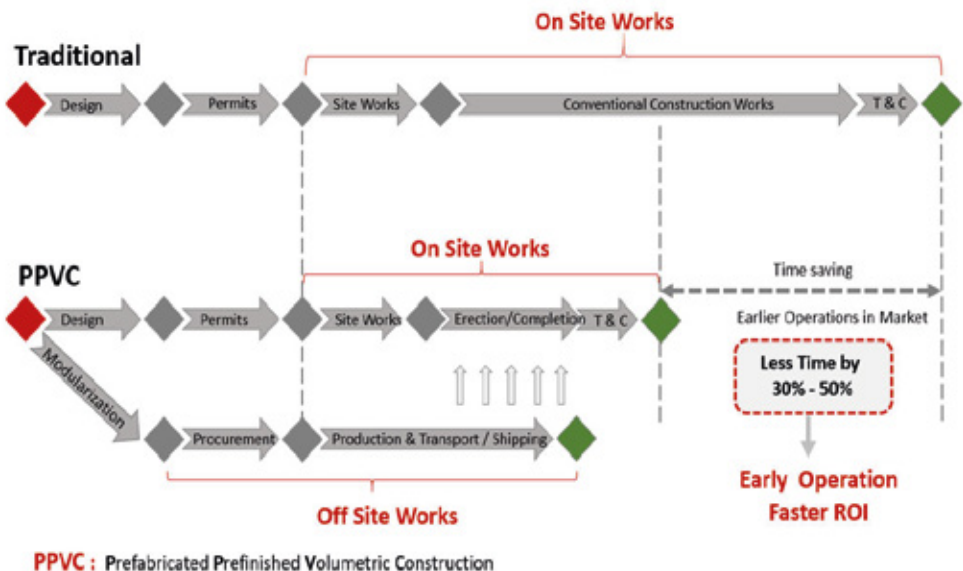
NAFFCO modular units are designed, manufactured under high-quality factory controlled conditions and quickly assembled on site compared to traditional construction and building methods. The modular units are generally customizable and built according to client and project requirements.

NAFFCO'S modular elements such as walls, facade, roofs, doors, firefighting system, etc.... are manufactured with the latest technologies to ensure high-quality consistent products that contribute to efficient and

innovative low-cost modular constructions.

Naffco modular units are freely stackable and can be used for multi-level building designs. The units can be permanent or temporary building structures. Based on requirements, units can be recycled, re-used, or relocated to different sites.

NAFFCO'S modular units are completely fireproof with Class A non-combustible elements such as fire rated ACP panels, fire rated sandwich panels, and fire rated door, etc..., to ensure full safety of the building occupants.



BENEFITS

NAFFCO'S modular units are suited for delivery of mass volume units of typical design prototypes for construction projects with tight execution deadlines and difficult site conditions.



FIREPROOF



ECONOMIC



DURABLE



SUSTAINABLE



ECOFRIENDLY



ENERGY-SAVING



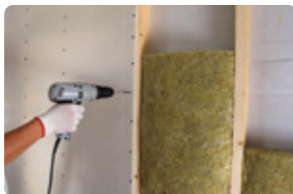
FAST INSTALLATION



EASY HANDLING



REUSABLE



SOUND REDUCTION



RECYCLABLE

SECTORS WE SERVE



EDUCATIONAL



HEALTHCARE



GOVERNMENT



COMMERCIAL



INDUSTRIAL



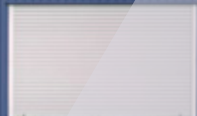
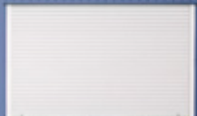
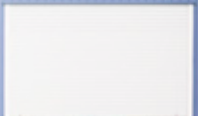
RESIDENTIAL



SOCIAL HOUSING



HOME CINEMA





T: +971 4 815 1111

F: +971 4 815 1222

www.naffcomodular.com

P.O. Box 262169

Dubai, U.A.E.

**The address mentioned here in this document is subject to change.*